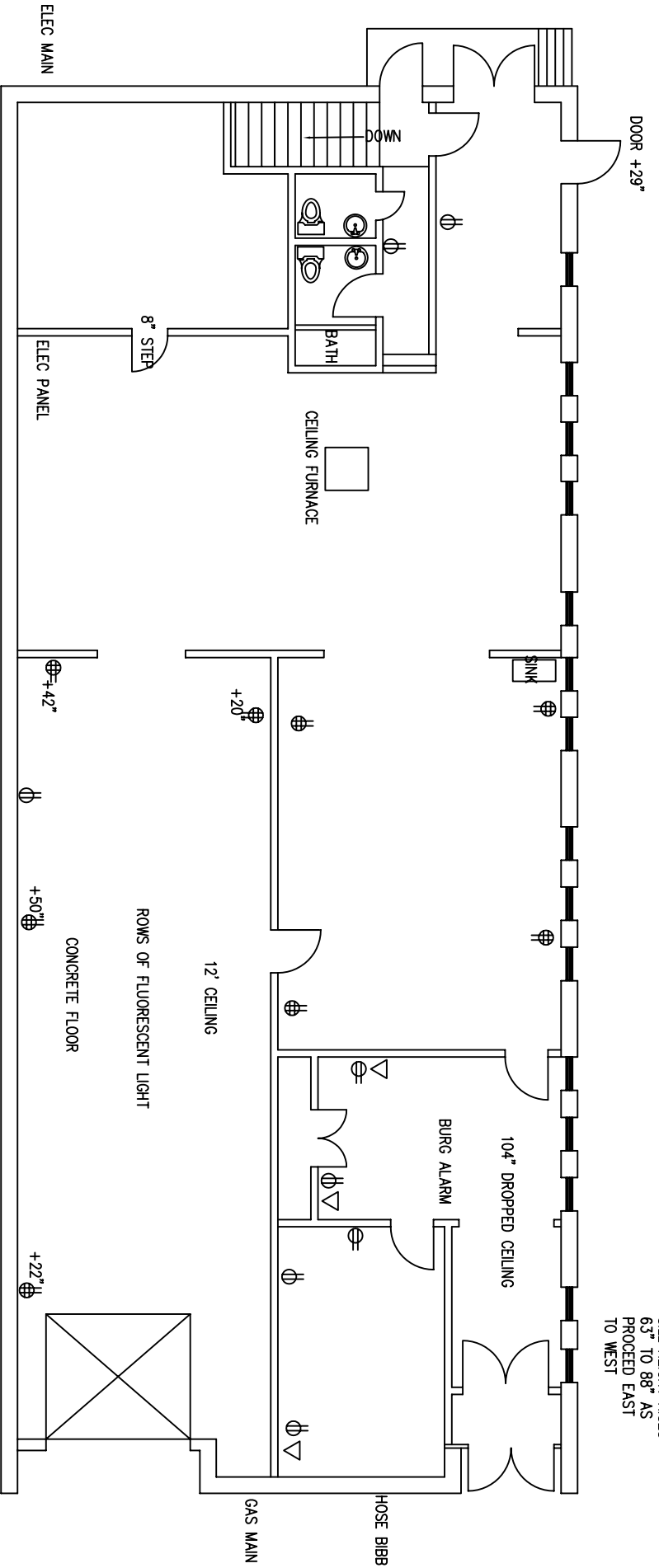
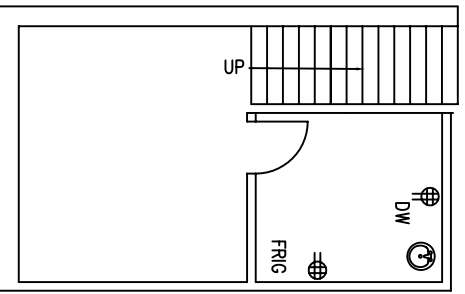


WINDOWS 28" WIDE  
 39" HIGH  
 SILL HEIGHT RISES  
 63" TO 88" AS  
 PROCEED EAST  
 TO WEST



AS-BUILT - MAIN FLOOR  
 SCALE: 1/4" = 1'-0"



AS-BUILT - BASEMENT  
 SCALE: 1/4" = 1'-0"

