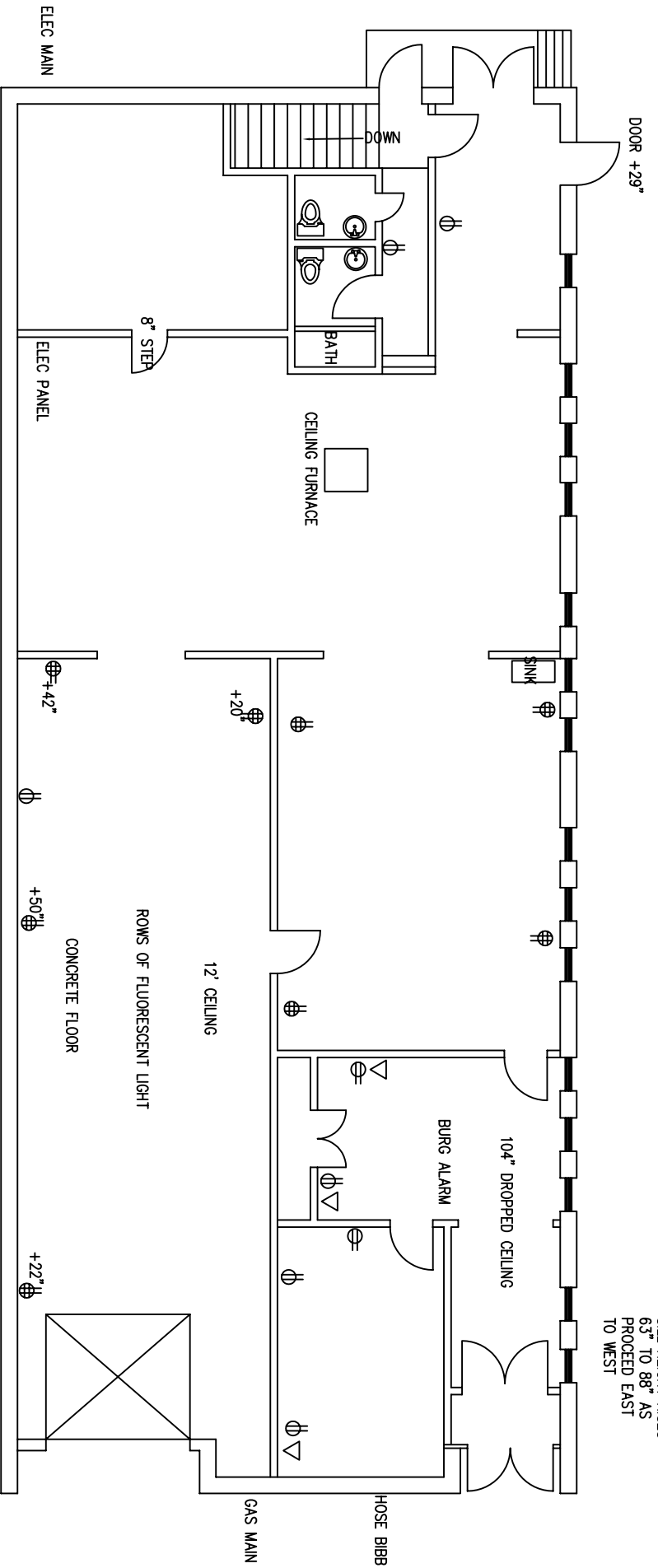
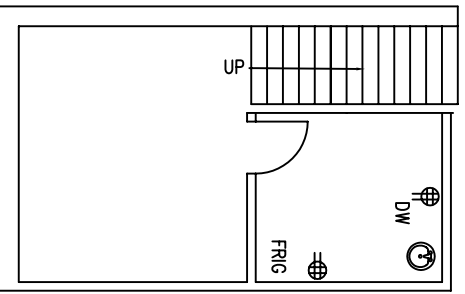


WINDOWS 28" WIDE
 39" HIGH
 SILL HEIGHT RISES
 63" TO 88" AS
 PROCEED EAST
 TO WEST



AS-BUILT - MAIN FLOOR
 SCALE: 1/4" = 1'-0"



AS-BUILT - BASEMENT
 SCALE: 1/4" = 1'-0"

